

# COLLECTIVELY INVESTING IN 3–5-YEAR-OLDS

to foster educational success

## KEY MOMENT

# 1

PRIOR TO ENROLLING IN KINDERGARTEN

## WORKING TOGETHER

A smooth first transition from early childhood to kindergarten relies both on partnerships among the various sectors involved with children and their families and on addressing the needs of all. By investing in this issue collectively, we help make going to school fun and increase parental engagement—strong foundations for educational success! Five key moments over a 16-month period offer numerous opportunities to work together.

CHILDREN

PARENTS

FAMILIES

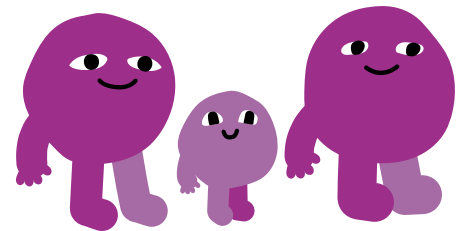
CHILDCARE CENTRES

SCHOOLS

LIBRARIES

COMMUNITY, SCHOOL, HEALTH, AND MUNICIPAL NETWORKS

**August to December...** At the start of a new school year, enrollment of next year's cohort of kindergarten students seems far off. But going by the principle that a smooth transition to kindergarten relies on planning by all stakeholders, this is indeed the time to start putting the necessary partnerships into place. Welcoming children and their families into a school is a community affair. And a shared responsibility.



## Working together is...

### FOCUSING ON CONTINUITY

- Viewing a child's preschool environment and the one they are about to enter as a single **ecosystem** creates a reassuring cohesion and consistency.
- Allowing stakeholders from the child's preschool environment to share their **expertise and experience** will enrich and enhance the transition to school.

### COMING TOGETHER AND JOINING FORCES

- Ensuring a smooth first transition to school relies on the **entire community** around a child, their family, and the school.
- **Cooperation and partnerships** will pave the way for support and guidance activities that often already align with the objectives of a smooth transition to school.
- **Collective deliberations** in advance of a cycle of school transition will enable the contribution of diverse viewpoints.

### PLANNING

- Creating a **first transition committee** in the fall, open to all community stakeholders, will help build beneficial and meaningful partnerships.
- Having a structured **work schedule** encourages all stakeholders to assume shared accountability beyond their normal or occasional responsibilities.
- Dedicating **time, and human, material, and financial resources** to ensuring a smooth first transition to school is an investment in educational success.

## · THE 5 KEY MOMENTS OF A SMOOTH FIRST TRANSITION TO SCHOOL ·



### Creating a positive first contact

JANUARY AND FEBRUARY

DURING ENROLLMENT IN KINDERGARTEN

**Working together**  
AUGUST TO DECEMBER

PRIOR TO ENROLLING IN KINDERGARTEN

**Instilling an enthusiasm for school**  
MARCH TO JUNE

AFTER ENROLLMENT IN KINDERGARTEN

### Valuing skillsets

JULY TO SEPTEMBER

AROUND THE START OF KINDERGARTEN

**Settling in**  
OCTOBER AND NOVEMBER

AFTER THE START OF KINDERGARTEN

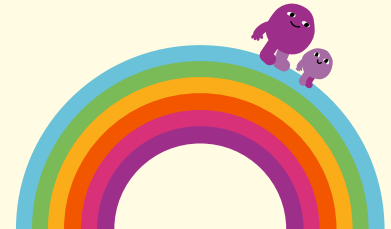
## A smooth transition from early childhood to kindergarten:



+ Creating partnerships related to the first transition to school helps to build **long-lasting connections among the school, families, and the community.**

+ Taking a planned and coordinated approach **reduces the pressure** placed on individual stakeholders [school staff in particular].

+ When the transition to school is collectively backed from the outset, children and families benefit from **broad support** based on multiple resources.



## Suggestion box

### Invite all sectors

with a presence in the community to contribute to a smooth transition to school, for the benefit of all children and families in the area.

### Think about communication now.

Review available kindergarten enrollment information – especially online information. Ensure it is up to date and easily accessible. Simplify text and standardize vocabulary.

### Assign one person as the contact

for school-transition matters. Give them a non-personal email address [e.g., transition@nameofschool... or @nameoforganization...] so that the link remains permanent even if someone else takes over the position.

### Distribute information

on the transition to school and enrollment in kindergarten [leaflets, web links, posters, etc.] produced by partners – especially those from school boards [no need to reinvent the wheel!].

### Have an in-depth knowledge

of the community and its characteristics, which will impact the transition to school. If necessary, hold training sessions to explore the matter further [e.g., inclusive practices in intercultural situations].

### Don't put off evaluating

the organizational impact of the transition to school [including the registration period] on current activities, and plan the human and other resources you will need.

### Keep an up-to-date list

of partners capable of supporting the transition to school and make full use of their expertise.

**Etc.!**

 [researeussitemontreal.ca](https://www.researeussitemontreal.ca) | La première transition scolaire: research, data sheets, resources, and videos.

<https://www.researeussitemontreal.ca/dossiers-thematiques/transitions-scolaires/la-premiere-transition-scolaire/>

A publication by



Réseau réussite  
Montréal

Financial partner of Réseau réussite Montréal



Want your own caterpillar?!

ORDER

COLOURFUL SUMMARY POSTER

The 5 information sheets in the *Collectively investing in 3–5-year-olds to foster educational success* are based on the five key moments in a smooth first transition to school. The sheets are distributed over the course of 16 months and provide information specific to each key moment at the appropriate time of year. They are produced by Réseau réussite Montréal–RRM, which works to disseminate effective concepts, based on a consensus of Montréal stakeholders, related to the transition from early childhood to kindergarten.